

Earthing BOQ(below ground) for 400kV FSC Wardha Project

Scope:

The present scope of earthing covers excavation, laying of conductor(600mm below FGL), welding and backfilling of the soil within FSC area at Power grid Wardha station.

The scope also covers fabrication,welding and laying of aux. earth mat of 1.5mx1.5 m (spacing between conductor 300mm)

At FSC Wardha station main earth mat has already been laid , in the present scope of work bidder has to put pig tail risers required for equipment connection , wherever required necessary connections between pigtail riser and main earth mat(already laid) shall also under bidder's scope.

Making of test pit with or without test link for rod electrode/electronic earthing shall also be under bidder's scope.

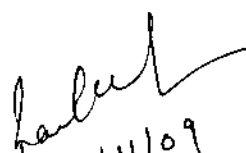
Bill of Quantity:

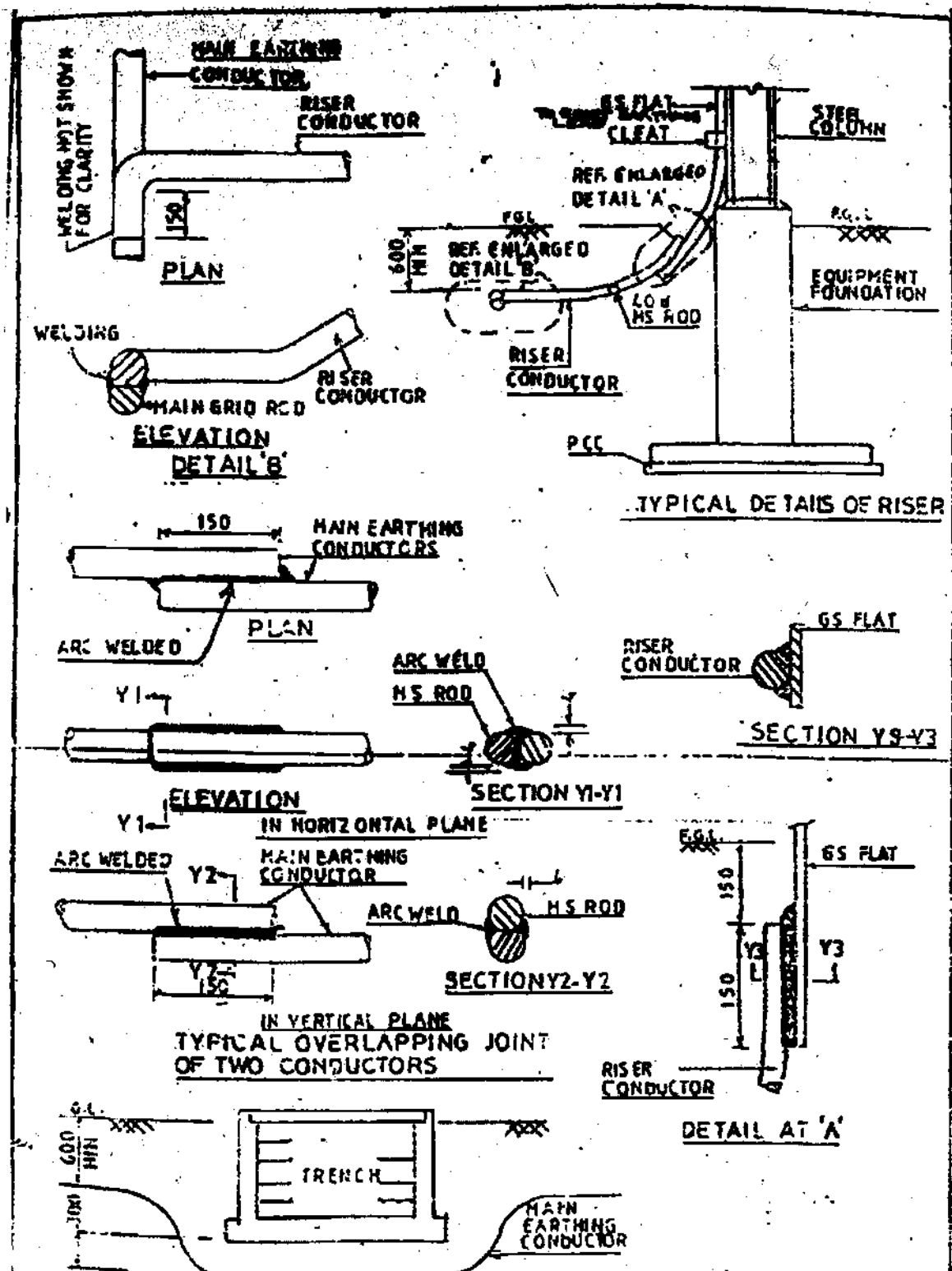
Sl. No.	Item Description	Qty.
1	Aux Earth Mat (1.5mX1.5m) with spacing between conductor 300mm	30 Nos.
2	No. of Pig tail risers	200Nos.
3	Laying of subsidiary conductor between pig tail riser and main earth mat	1500meter
4.	Test Pit for Rod Electrode	9Nos
5	Test pit for electronic earthing	4Nos.

NOTE: The Indicated Qty. is tentative and may vary up to any extent. Earthing conductor/conductor means 40mm dia MS Rod.

Drawing enclosed.

**Power Grid standard drawing “ EARTHING DETAILS” No. C-ENG-STD-001
Rev-01**


11/11/09



DETAILS OF EARTHING CONDUCTOR CROSSING THE TRENCH			FOR TENDER PURPOSE ONLY			
POWER GRID CORPORATION OF INDIA LTD			DRAWING NO: C-ENG-STD-001		REV. 1	
PROJECT: STANDARD	TITLE: EARTHING DETAILS	DATE: 17.1.02	DRAWN:	CHECKED:	APPROVED:	

Handwritten signature
11/11/09